

UCLA David Geffen School of Medicine

Become an Outstanding Physician and ...

Opportunities at DGSOM!

Becoming an *outstanding* physician AND ...

Scientist
Public Health
Expert
Artist
Social Activist
Entrepreneur
Writer....





CULTURAL NORTH STAR

The values that guide us

DO WHAT'S RIGHT.

We are united by our shared mission of advancing science and medicine
We work together to eliminate inequity
We are grounded in ethics and data
We balance the short and long-term effects of our actions

MAKE THINGS BETTER.

We come to work to make an impact
We are constantly curious
We seek out diverse voices
We embrace failures as opportunities to learn

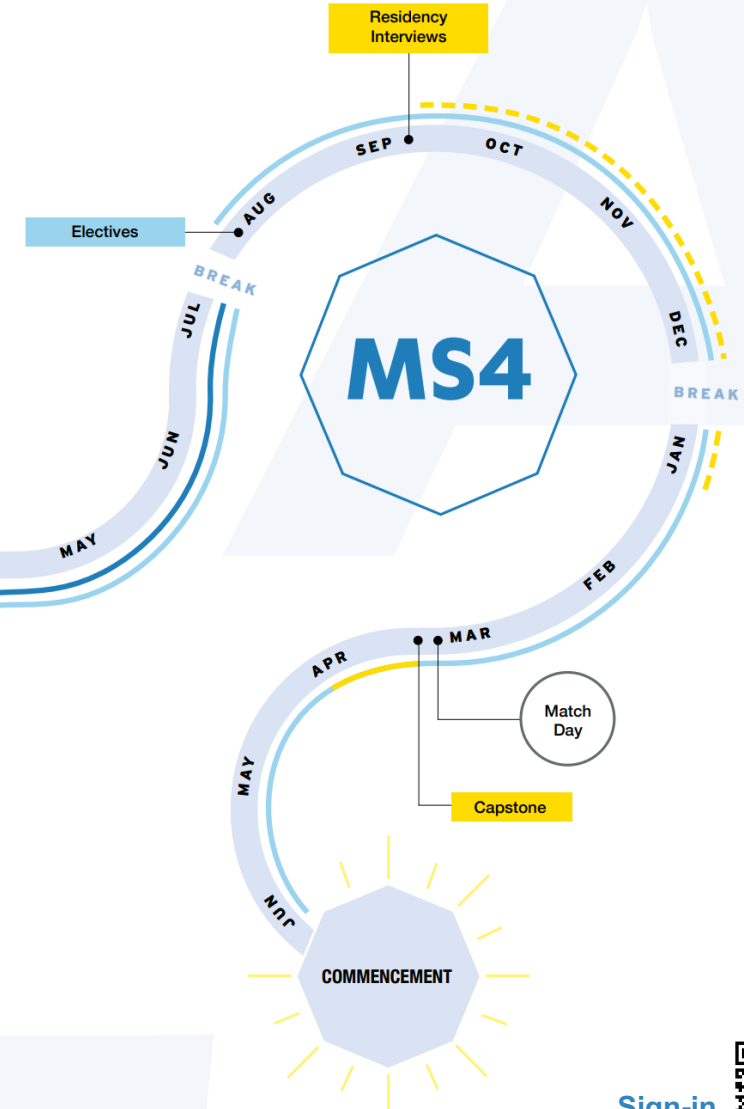
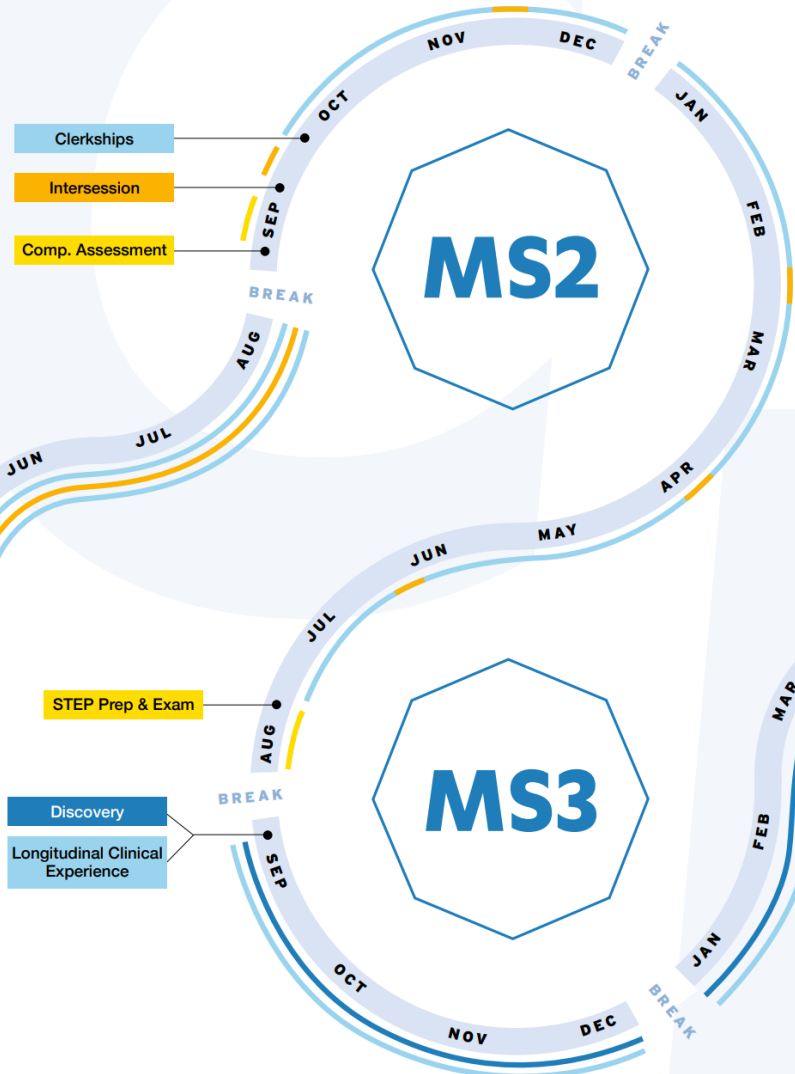
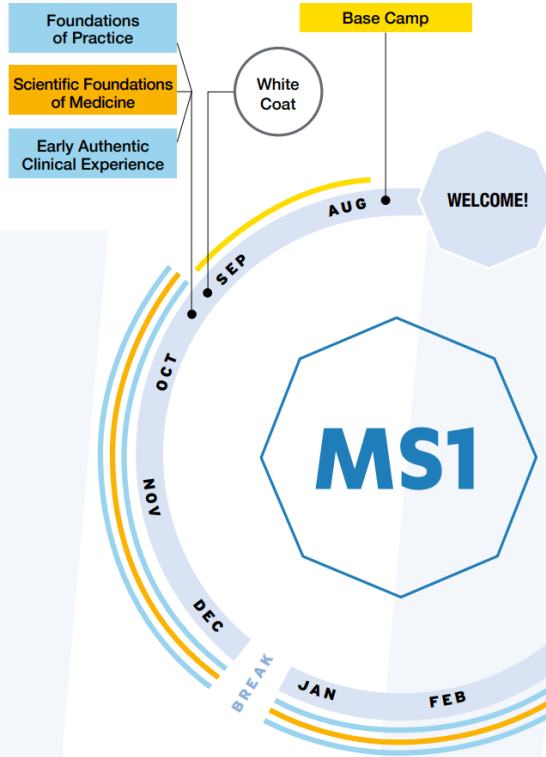
BE KIND.

We are strongest when we show empathy
We have the courage to be honest
We listen to understand
We engage in dialogue even when we disagree



YOUR UCLA JOURNEY BEGINS HERE!

LEGEND
 PREPARATION AND ASSESSMENT SCIENTIFIC EMPHASIS CLINICAL EMPHASIS DISCOVERY



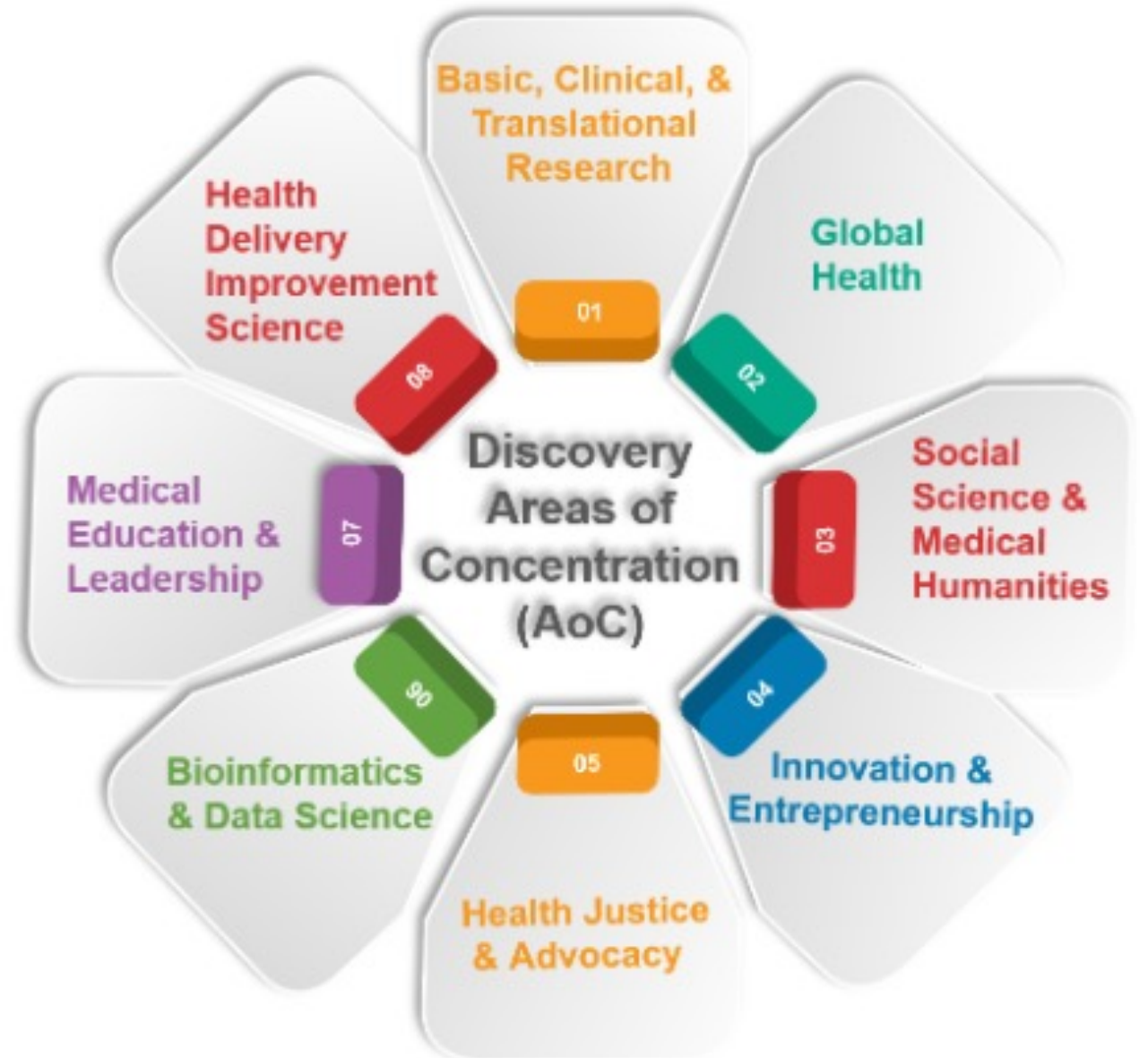
It's Not About a Degree; It's About a Life of Impact.

Sign-in Sheet



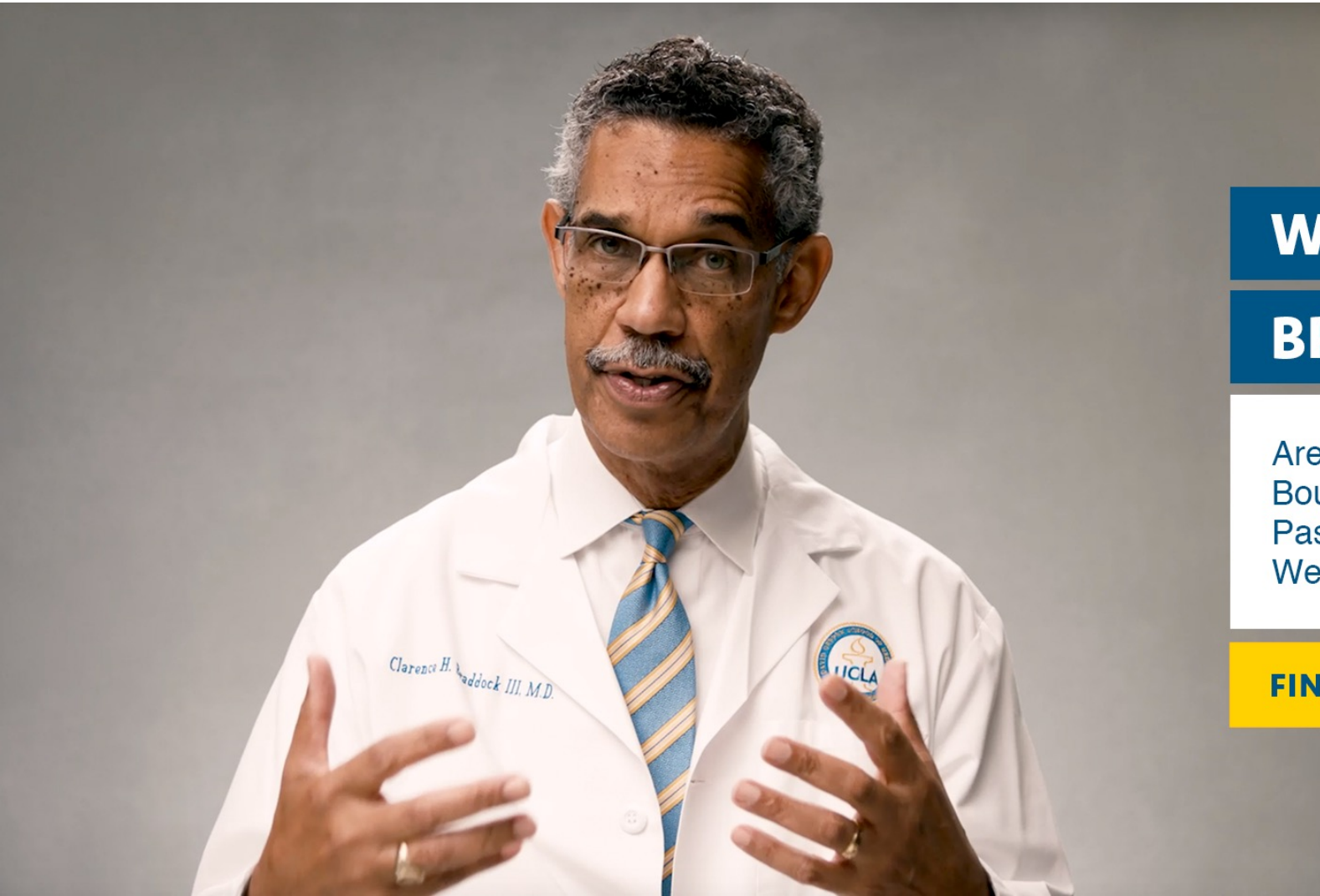
Discovery Year (year 3)

- 1) Select your area of focus.
- 2) Spend the year pursuing your selected area and a longitudinal clinical experience.



It's about creating your life of **IMPACT** in a like-minded community.





WE CHASE

BREAKTHROUGHS

Are you insatiably curious?
Boundlessly optimistic?
Passionate about healing the world?
We think you'll fit right in.

FIND OUT HOW

Pre-Health Pathway Programs



DGSOM Office of Outreach and Pathway Programs

We're here for you!

Pathway Programs

Free and limited cost programs are available at UCLA to guide you to your chosen Health Career.

Pre-Health Guidance Center

Providing you with **resources**, connections to **pathway programs**, and **information** to help you on your journey to medicine.

Events

Not sure what's right for you? We can provide you with key events information so you can choose your future Health career.

Pathway Programs

DGSOM offers options:

1

Summer Health Professions Program (SHPEP) - No cost

2

Pre-Medical Enrichment Program (PREP) - No cost

3

Re-Application Program (RAP) - Limited cost

... And many more options are available at DGSOM and UCLA Health

**Once a Bruin
always a Bruin.
See yourself at UCLA.**



UCLA SHPEP

For **Freshmen and Sophomores** in college considering health professions.



Tracks: Medicine, Dentistry, Nursing

- **6-week program during June 20 – July 28, 2023**
- **Residential**, in person
- **Highlights:** Intro to health professions, Learning Skills, Problem-Based Learning, Financial Literacy, Wellness Workshops, Track specific Admissions Panel, Individual Advising, Longitudinal Mentorship



Develops future leaders that will change the face of **medicine, nursing, and dentistry** and improve health care delivery, policy and research in **underserved** communities.

Track: Medicine

Timeframe

- 4-week program
- Summer: July 24 – August 18, 2023
- Application opens: December 1, 2022

Highlights

- MCAT Preparation
- Guide to AMCAS
- Learning Skills
- Problem-Based Learning
- Inquiry Based Learning
- Financial Literacy
- Wellness Workshops
- Interview Preparation
- Individual Advising
- Longitudinal Mentorship

UCLA PREP



For **recent graduates** from junior college, and college **Juniors and Seniors**.

Designed to provide premedical students from disadvantaged backgrounds with the means to strengthen their **ability and readiness** to study medicine.

UCLA RAP

Postbaccalaureate Program For Re-applicants to medical school

A comprehensive, structured re-application program designed to assist students from disadvantaged backgrounds who have been unsuccessful in gaining admission to a U.S medical school.



Highlights

- Individualized re-application plan
- MCAT Preparation
- Learning Skills
- Problem-Based Learning
- Inquiry Based Learning
- Financial Literacy
- Wellness Workshops
- Interview Preparation
- Longitudinal Mentorship

- **Participants:** Reapplicants, California Residents only
- **Focus:** Academic Enhancement
- **Duration:** 11 month-long program
- **Timeframe:** September – August
- **Cohort:** Approx. 10 students



UCLA SHPEP

Application Opens: November 1, 2022

Uclashpep@mednet.ucla.edu

UCLA PREP

Application Opens: December 1, 2022

Uclaprep@mednet.ucla.edu

UCLA RAP

Application Opens: January 2023

Uclarap@mednet.ucla.edu

Outreach & Pathway Office

DGSOM Outreach & Pipeline Programs Office



outreach@mednet.ucla.edu



<https://medschool.ucla.edu/apply/outreach>

Virtual Office Hours:

Thursdays from 1:00pm – 2:00pm PST

Application to MD



Medical School

Preparation to Apply



When?

Start early and plan ahead.



Where?

Do your homework on schools and options.



How?

Submitting your strongest application.

When?

Planning Ahead



Timeline

Application Process

Now - Preparation

Gather experience.
Research schools.
Prepare for your application.

Fall – Institutional Application

After primary application
review, complete institutional
application if invited to do so.

Oct.-Jun. - Admission

Receive offers of admission
and waitlist offers. Respond
to these offers.

Preparation

Admission

May-Jun. - Apply

Work on AMCAS application
and submit.

Sept.-Jan. - Interview

Prepare for and complete
interviews with schools
sending you an invitation.

Where?

Do your homework to determine where to apply.

AAMC

Medical School Admission Requirements

Search Institutions

COVID-19-Related Updates in MSAR [Learn More.](#)

Showing 1 - 10 of 172

- Enter Institution Name -

Sort By: School A - Z

Filters

Location

- Country, State -

Accepts Applicants

Out-of-State/Province

U.S.

Canadian

International

Albany Medical College
Albany, NY | Private Institution | Urban Campus

Combined Degrees MD/PhD BS/MD MD/MPH MD/MBA	Also Accepts Out-of-state	Application Deadline 11/01/2020	First Year Class 139	Tuition & Fees \$58,221 In-state \$58,221 Out-of-state
--	-------------------------------------	---	--------------------------------	---

Albert Einstein College of Medicine

Medical School Admission Requirements (MSAR)

Compare schools and admission requirements on MSAR to maximize your chances of acceptance.

- Average GPA
- Average MCAT
- Acceptance rates

How?

Academics



Ensure your academic qualifications meet requirements for admission.



Check course requirements for admission.



Ensure you have successfully completed classes in all core competencies.



GPA matters

Requirements

Required Authors

Required number of letters

Committee letters

Relationships

Authors should know you very well

Significance

Letters should relate to significant activities/roles you describe in the application.

Letters of Reference



Limited numbers of letters are permitted per application.

Make yours count.

MCAT

When to Take

Early

Take the MCAT when you are well prepared, ideally before the mid-point of the application season.

Retaking

511

Median score of medical school matriculants nationwide.
Retake if measurable improvement is possible.

Table 4. Percentage and Number of 2016- and 2017-Entering Students Admitted With Scores From the Current MCAT Exam Who Passed the Step 1 Exam on the First Attempt, by MCAT Total Score and Undergraduate GPA Ranges

GPA Total	MCAT Total										
	472-485	486-489	490-493	494-497	498-501	502-505	506-509	510-513	514-517	518-528	All
3.80-4.00	--	--	88% 38/43 ○	88% 162/184 ○	93% 553/596 ●	96% 1,344/1,395 ●	98% 2,165/2,220 ●	99% 2,543/2,577 ●	>99% 2,328/2,339 ●	>99% 2,236/2,246 ●	98% 11,376/11,608
3.60-3.79	--	--	83% 39/47 ○	82% 169/207 ○	90% 511/565 ●	95% 1,056/1,111 ●	97% 1,640/1,699 ●	98% 1,820/1,852 ●	>99% 1,309/1,319 ●	>99% 801/804 ●	97% 7,350/7,609
3.40-3.59	--	--	80% 33/41 ○	79% 121/154 +	91% 381/419 ●	92% 644/698 ●	96% 843/880 ●	98% 900/916 ●	>99% 542/546 ●	>99% 298/300 ●	95% 3,766/3,962
3.20-3.39	--	--	68% 17/25 ○	83% 81/98 ○	89% 198/223 ○	93% 328/354 ●	95% 358/378 ●	95% 322/340 ●	99% 231/234 ●	100% 88/88 ●	93% 1,624/1,747
3.00-3.19	--	--	--	84% 37/44 ○	87% 90/104 ○	91% 151/166 ●	94% 134/143 ●	>99% 127/128 ●	94% 60/64 ●	100% 29/29 ●	92% 633/689
2.80-2.99	--	--	--	80% 12/15 ○	87% 27/31 ○	93% 51/55 ●	96% 45/47 ●	94% 31/33 ●	94% 15/16 ●	--	91% 197/217
2.60-2.79	--	--	--	--	92% 11/12 ●	79% 15/19 +	81% 13/16 ○	--	--	--	84% 70/83
2.40-2.59	--	--	--	--	--	--	--	--	--	--	84% 27/32
2.20-2.39	--	--	--	--	--	--	--	--	--	--	82% 9/11
2.00-2.19	--	--	--	--	--	--	--	--	--	--	--
Less than 2.00	--	--	--	--	--	--	--	--	--	--	--
All	38% 5/13	57% 17/30	81% 139/172	83% 590/715	91% 1,776/1,956	94% 3,598/3,809	97% 5,207/5,392	98% 5,758/5,861	>99% 4,495/4,528	>99% 3,469/3,484	97% 25,054/25,960

citation: AAMC. *Using MCAT® Data in 2023 Medical Student Selection*. Washington, DC: AAMC; 2022.

Note: Blue shading (●) = pass rates of 90%-100%; green shading (○) = pass rates of 80%-89%; orange shading (+) = pass rates of 70%-79%. Dashes = cells with fewer than 10 observations; blank cells = cells with zero observations. For students who took the MCAT exam multiple times, the most recent MCAT total score was used in this analysis.

Experience

1

ACADEMICS

Courses, Grades



Academic performance

Relationships with faculty

Honors and distinctions

2

CLINICAL

Experience



Familiarity with and experience in a medical/clinical setting or related

Work with patients

3

SERVICE

Community Service



Genuine passion and care for others

Rising to leadership in service

Making an impact

4

RESEARCH

Experience



Experience with research

Publications and presentations

Independent research

Application Consideration

What happens once you click “Submit”?

Primary Review

A full range of factors are considered in the initial application screening.



Holistic Review Process

- Focus on the “whole” application
- No disproportionate focus on any one factor

Secondary Review

Invitation to complete a secondary Institutional Application.

Mission-aligned consideration



Interview

There are a variety of interview styles at medical schools:

- 1 **Traditional Interview**
- 2 **Multiple Mini Interview (MMI)**
- 3 **Group Interview**
- 4 **Virtual Interview**

Decision Issuance



Final decisions are issued by the
Admissions Committee

- Holistic review of each application
- Mission criteria are assessed
- Potential success factors are weighed

“

Congratulations
on your offer of
admission!

**Admission is just
the beginning ...**



Merit Scholarships

Support to launch your **life of impact**

1

DGSOM Impact and Distinction

Tuition + Fees + Living Stipend

2

L.A. Care Scholarship

Tuition + Fees + Living Stipend

3

Leaders of Tomorrow Scholarship

Tuition + Fees + \$5k Research Stipend

4

DGSOM Scholarship for Excellence

Tuition + Fees

5

DGSOM Dean's Merit Award

Variable amount up to Tuition + Fees

Your potential is limitless here.

On UCLA's campus footprint, you'll find opportunities to explore passions across a broad spectrum, and connect with exceptional collaborators. Your life of impact awaits.



Your Track, Your Path



Traditional MD Track

UCLA MD

Seeks students who will be future leaders, have distinguished careers in clinical practice, teaching, research and public service.

PRIME-LA Track

PRIME-Leadership & Advocacy

A 5-year dual degree program focusing on the development of leaders in medicine who will improve health care delivery, research, and policy in underserved communities.

MSTP Track

Medical Scientist Training Program (MSTP)

Dedicated to educating and training exceptionally qualified individuals as MD-PhD students for careers in the biomedical and socio-medical sciences.

Connect with Admissions:

DGSOM Admissions Office



(310) 825-6081



SOMadmiss@mednet.ucla.edu



<https://medschool.ucla.edu/education/md-education/admissions>

Join Our Virtual Office Hours:

Wednesdays at 11:00am PST

<https://uclahs.fyi/officehours>



GEFFEN HALL