

Emergency Room Medical Scribe

Giselle Pineda



HELLO!

I am Giselle Pineda

Seton Hall University '22

B.S. Biology; B.S. Catholic Studies

ED Medical Scribe

RWJBH Medical Group



1

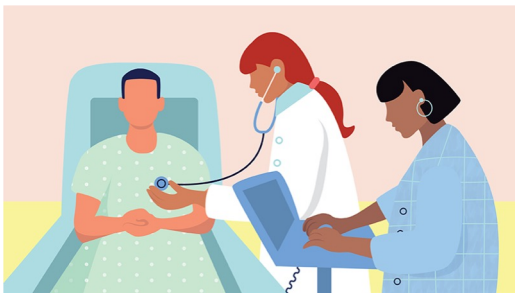
What is an ED Medical Scribe






ED Medical Scribe:

- Basically assistant to the ED physician, PA, NP
- Documentation
- Help the physician deliver the best and most efficient patient care.
- One-on-one collaboration with physicians, PAs, NPs.
- Ensure proper billing requirements are met.





**In-Person
Telemedicine
Virtual**

2 How to become an ED Medical Scribe

General Attributes	<ul style="list-style-type: none">• Professionalism• Responsibility• Ability to task switch• Confidence• Maturity• Punctuality• Self-motivation
Essential Attributes	<ul style="list-style-type: none">• High school diploma or equivalent• Knowledge of anatomy and medical terminology• Knowledge of or experience with electronic medical records
Preferred Additional Attributes	<ul style="list-style-type: none">• Computer skills• Knowledge of how to write medical history• Knowledge of International Classification of Diseases (ICD) coding• Knowledge of HIPAA as it pertains to ensuring the privacy of patient information



Main Requirements:

- ❖ At Least 18 years old
- ❖ Basic Medical Terminology familiarity
- ❖ Background check; Medical Clearance
- ❖ Proficient in English

Preferred Requirements:

- ❖ Direct Patient Care environment experience
- ❖ Attention to detail; Ability to Multitask and work under pressure
- ❖ Typing Test (50 wpm)
- ❖ Passion for patient care and medicine
- ❖ College level science courses

Tips To Follow Doctor's Abbreviations

Rx	=	Treatment	BD	=	Before Dinner
Hx	=	History	Tw	=	Twice a Week
Dx	=	Diagnosis	SQ	=	Sub Cutaneous
q	=	Every	IM	=	Intramuscular
qd	=	Every Day	ID	=	Intradermal
qod	=	Every Other Day	IV	=	Intravenous
qh	=	Every Hour	QAM	=	Every Morning
S	=	Without	QPM	=	Every Night
SS	=	On e Half	Q4H	=	Every 4 hours
C	=	With	QOD	=	Every Other Day
SOS	=	If Needed	HS	=	At Bedtime
AC	=	Before Meals	PRN	=	As Needed
PC	=	After Meals	PO or "per os"	=	by Mouth
BID	=	Twice a Day	AC	=	Before Meals
TID	=	Thrice a Day	PC	=	After Meals
QID	=	Four Times a Day	Mg	=	Milligrams
OD	=	Once a Day	Mcg/ug	=	Micrograms
BT	=	Bed Time	G or Gm	=	Grams
hs	=	Bed Time	1TSF (Teaspoon)	=	5 ml
BBF	=	Before Breakfast	1 Tablespoonful	=	15ml



Slang	Medical
Addict	Person with addiction, Person with substance use disorder, patient with the disease of addiction
Junkie, dope fiend	Patient with opioid use disorder
Clean urine	Urine negative for illicit or non-prescribed drugs
Dirty urine	Urine positive for x,y, or z
Drunk, smashed, bombed	Alcohol addicted, intoxicated
Crack head, pot head	Cocaine addicted, THC abuse
La La Land	Intoxicated
Street addict, hard-core addict	Patient with the disease of addiction
Speed-balling	Using heroin and cocaine together
Meth	Methadone or Methamphetamine
Strung out	Debilited, intoxicated
Cop/Fix	Obtain, purchase/Dosed, took
Hooked	Addicted
Kicking	Withdrawal Syndrome

Road to becoming a Scribe

Apply for a position near you!

1

Training Week 1:
Medical Terminology
Shorthand Dictionary
Typing Quizzes

3

Training Week 4: Onsite
Familiarity with program
Creating Macros
Take dictations w/trainer

5

2
Begin reviewing/learning
basic Medical Terminology;
Practice your typing speed
and accuracy

2

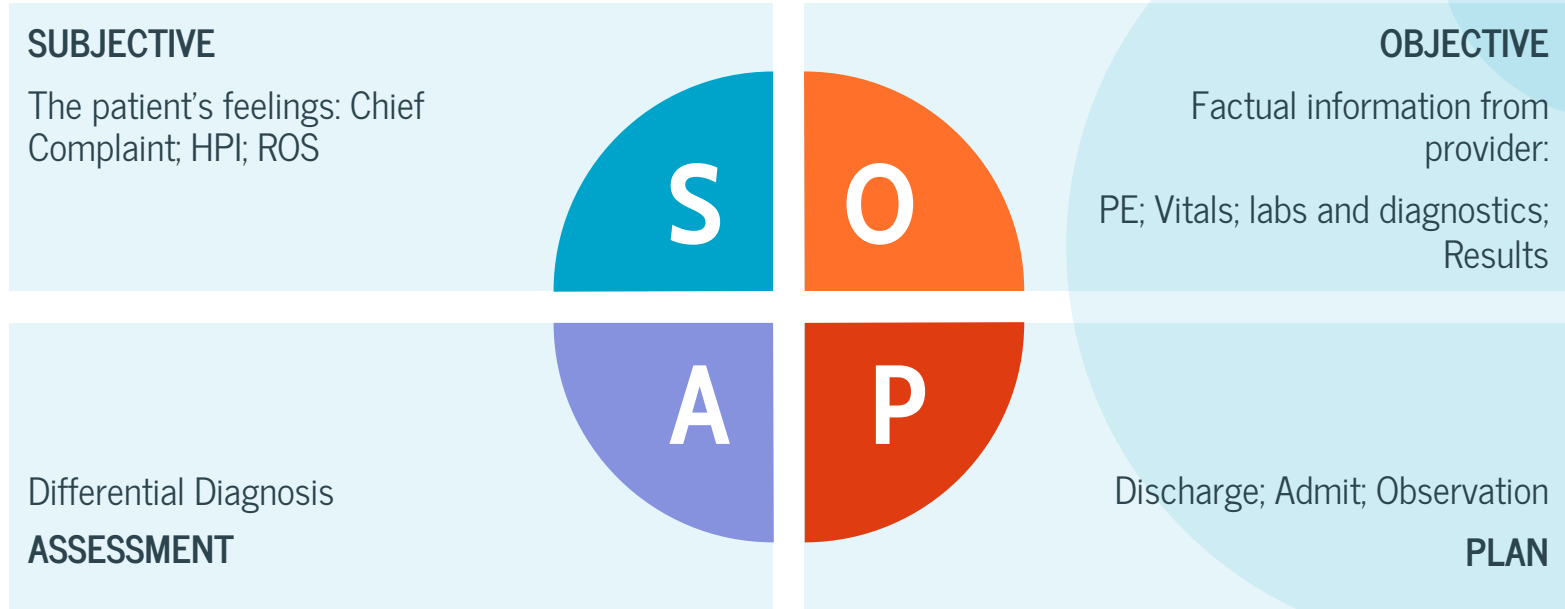
4
Training Week 2:
Components of Physician Note
Tracking Shell Familiarity
Real Time Dictations

4

6
Training Week 5: Onsite
Write notes on your own
Follow and Populate results
Start and End notes

6

Physician Note



Quick Tips:

- Practice your typing speed and accuracy:
<https://www.typingtest.com/>
- Practice dictations and shorthand (dications and diagnostics)
- Take shorthand notes separately
- Be Specific
- Create macros and templates!
- Ask and Learn clinicians preference



A screenshot of the TypingTest.com website interface. The page is light blue and features a green 'Start Now' button at the top left. Below it, the text reads 'Check your typing skills in a minute' and 'Type away to join 150+ million test takers!'. There are two dropdown menus for '1 Minute Test' and 'Medium Text'. A 'START TEST' button is in the center, and a 'BENCHMARK' button is on the left. A 'TRAIN' button is on the right. At the bottom, there is another 'Start Now' button and instructions: '1. Click "Start Now" 2. Add Identity Protector for Chrome™'. The interface also includes illustrations of a person at a laptop and a person at a laptop with a 'TRAIN' button.





If it is not
documented it
was not done!



THANKS!

Any questions?

